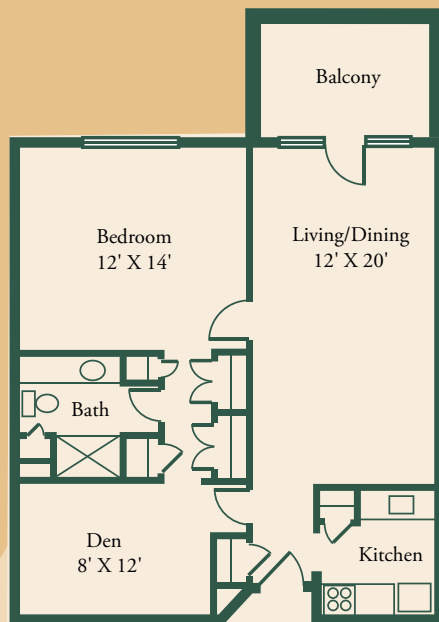


FLOOR PLAN:

One Bedroom + Den



Square Footage: 810 sq.ft.

Living/Dining: 12' x 20'

Bedroom: 12' x 14

Den: 8' x 12'

Amenities

HOME

Private, secure residence with new carpeting and fresh paint

Fully equipped kitchen

Easily accessible trash chutes

Individually controlled heating and cooling

Full outside balcony or patio with a panoramic view of our lushly landscaped campus

Individual lockable storage

All utilities except telephone and cable television

Property taxes and building insurance

COMMUNITY

Laundry facilities on each floor (Washer/dryer hookups are available in some homes.)

Weekly housekeeping and linen service

One meal daily in the fine dining room under the direction of our professional chef

Full use of a heated salt water exercise pool and fitness center

Complete interior and exterior maintenance of your apartment home, common buildings and grounds (appliances included)

Planned social, cultural and recreational activities/full-time activities coordinator

Priority placement in Assisted Living or The Health Center

Weekly banking services

Covered parking

Regularly scheduled transportation for group activities and events

Private, chauffeured transportation is also available by appointment

State-of-the-art fire safety system with central alarm and complete sprinkler system

24-hour security service and a medical alert system

Soda Shop

Library

Business Center

To learn more about our services
visit: nhccare.com/locations/adamsplace

To print this page: press Ctrl-P.