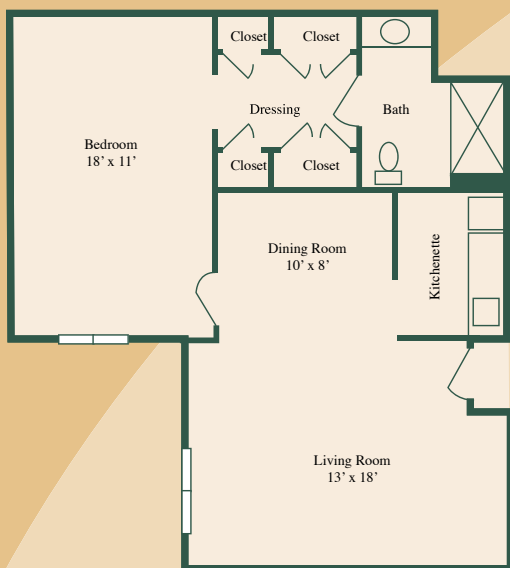


## FLOOR PLAN:

### Elmington (Luxury One Bedroom)



**Square Footage: 512 sq.ft.**

**Living Room: 13' x 18'**

**Dining Room: 10' x 8'**

**Bedroom: 18' x 11'**

## Amenities

### HOME

Emergency Response System  
24-hour licensed nursing supervision  
Full-time Registered Nurse  
Individual thermostat  
Kitchenette with refrigerator

Walk-in shower  
Complimentary wireless internet service  
Cable TV available  
All utilities including telephone (long distance not included)

### COMMUNITY

Fine dining directed by our professional chef  
Private dining rooms for special occasions  
Soda Shop  
TV room  
Salon/Barber shop  
Library  
Automatic front doors  
Beautifully landscaped and enclosed courtyard with gazebo  
Social, recreational, educational, and spiritual activities  
Weekly housekeeping and linen service

Scheduled transportation to doctor appointments  
Planned outings, shopping, and other events  
Wheelchair accessible bus  
Choice of two sunrooms for leisure activities  
State-of-the-art fire safety system with central alarm and complete sprinkler system  
24-hour security service and a medical alert system  
Priority placement in The Health Center, if needed  
Respite Care

To learn more about our services  
visit: [nhccare.com/locations/adamsplace](http://nhccare.com/locations/adamsplace)

To print this page: press Ctrl-P.