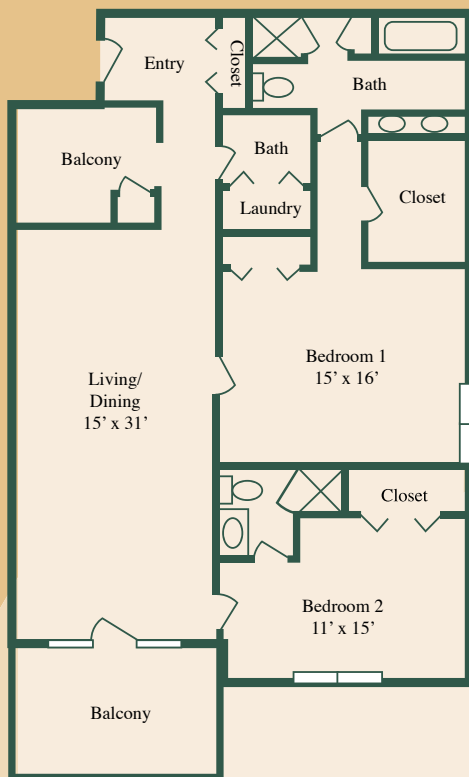


**FLOOR PLAN:**

**Two Bedroom  
Luxury**



Square Footage: 1500 sq.ft.

Living/Dining: 12' x 28'

Bedroom 1: 15' x 16'

Bedroom 2: 11' x 15'

**Amenities**

**HOME**

- Private, secure residence with new carpeting and fresh paint
- Fully equipped kitchen
- Easily accessible trash chutes
- Individually controlled heating and cooling

- Full outside balcony or patio with a panoramic view of our lushly landscaped campus
- Individual lockable storage
- All utilities except telephone and cable television
- Property taxes and building insurance

**COMMUNITY**

- Laundry facilities on each floor (Washer/dryer hookups are available in some homes.)
- Weekly housekeeping and linen service
- One meal daily in the fine dining room under the direction of our professional chef
- Full use of a heated salt water exercise pool and fitness center
- Complete interior and exterior maintenance of your apartment home, common buildings and grounds (appliances included)
- Planned social, cultural and recreational activities/full-time activities coordinator

- Priority placement in Assisted Living or The Health Center
- Weekly banking services
- Covered parking
- Regularly scheduled transportation for group activities and events
- Private, chauffeured transportation is also available by appointment
- State-of-the-art fire safety system with central alarm and complete sprinkler system
- 24-hour security service and a medical alert system
- Soda Shop
- Library
- Business Center

To learn more about our services visit: [nhccare.com/locations/adamsplace](http://nhccare.com/locations/adamsplace)

To print this page: press Ctrl-P.