



NOVEMBER 2019

• 850 E. Butler Road • Greenville, SC 29607 • p: (864) 675-6421 • f: (864) 675-9122 •



Administrative Team

Gideon Sellars	Administrator
Lisa Bollinger	Business Office
Waleed Berber	Admissions
Dustin Boggs	Nursing
Karen Trotter	Social Services
Evan Hammett	Rehab
Carrie Hawkins	Dietary
David Cathcart	Dietary Manager
Yolanda Brockman	Medical Records
Joey Hanks	Plant Operations
Heather Wiegand	Activities
Linda Knight	Human Resources
Kimberly Elliott	Marketing

Office Hours

Mon. - Fri. 8:30 a.m. - 5 p.m.

Nurses' Station

Unit 1	864-527-9458
Unit 2	864-527-9460
Unit 3	864-527-9467

Open Enrollment

Dear Family Members,

Open Enrollment for Medicare recipients is October – December. This is the time when Medicare recipients can enroll in a drug plan, review their health care insurance and drug coverage, and possibly make changes. For questions regarding how to prepare, compare and decide, you can contact the following:

Network HealthCare Pharmacy (864) 228-0816 (drug plans)
Your Prescription Drug Plan provider
Medicare at 1-800-633-4227 or www.medicare.gov

If you should make any changes to your current benefits or receive any new insurance or prescription cards, please send a copy to Lisa Bollinger in the Business Office.

Thank you,

Lisa Bollinger
Business Office Manager
NHC HealthCare Mauldin
Phone: (864)527-9456 (direct line)
Phone: (864)675-6421 (facility)
Fax: (864)675-9122
Email: lbollinger@nhcmauldin.com
Website: www.nhcmauldin.com

Tree of Blessings

During the holiday season, we all take time to celebrate the gifts that we have been given; especially our family and friends. Again, this year, we will have the Tree of Blessings in our lobby as our way of celebrating those who have touched our lives. For \$5, an ornament can be purchased and placed on the tree with your loved one's name written on it. We will also be asking for sponsorships from local companies. A gift advertising the name of the company will be placed under the tree recognizing them for their contribution. All of the money raised will be given to The Foundation for Geriatric Education (TFGE), which funds the continuation of quality education for those who work with the geriatric population. TFGE has contributed to the nursing programs at Greenville Technical College, Piedmont Technical College, Clemson University and the University of South Carolina. Ornaments and sponsorships can be purchased at the front desk. If you have any questions, please contact the receptionist.

Annual Christmas Dinner

Please celebrate the Holiday Season with us at our Annual Christmas Dinner on December 10 from 5 p.m. to 7 p.m. in the Main Dining Room. Please RSVP by December 3 and limit guests to 2 per resident.

Resident

of the Month

Dottie Kinsman

Dottie was born in Williamsport, PA into a family given to faith and service and has continued that tradition all her life. From childhood through her teenage years she was active in Girl Scouts winning many badges and working as a camp counselor. At Marywood College she sang and did synchronized swimming while working on her teaching degree. After Marywood she spent a year with Catholic Lay Extension Volunteers working as a missionary largely serving Hispanic residents in Utah. After that experience she taught remedial reading in the Williamsport school system and also working for Head Start. Then she went to grad school at Penn State and got her Masters in Counseling. Though subsequently married and raising two daughters she worked extensively for St. Thomas Parish in Ft. Thomas, KY. For ten years she was Director of CCD religion classes for children in public schools along the way being named Catechist of the Year for the Diocese of Covington; helped establish Vacation Bible School at St. Thomas; edited the parish newsletter for many years; chaired large scale faith building programs such as Renew and Isaiah 43; wrote for the Diocesan newspaper; designed and made monthly cards for parishioners unable to attend Mass; and was a member of the Resurrection Choir which sang at funeral Masses. Outside St. Thomas she made monthly birthday cards for residents of Carmel Manor Nursing Home and the VA Domiciliary in Ft. Thomas; taught reading in an Adult Literacy program; started a Chronic Pain Support Group at a local hospital; and conducted weekly programs of trivia and singing for several nursing homes.

Please Visit Our

Beauty Shop

Shampoo, Rinse or Condition & Set - **\$15**

Perm, Hair Cut & Set - **\$46**

Barber Rinse - **\$1.50**

Shampoo & Female Cut - **\$11.25**

Male Cut (includes trim, eyebrows & ears) - **\$12**

Beard & Mustache Trim - **\$5.75**

Coloring - **\$32.75**

Shampoo - **\$3**

Partners

of the Month

Congratulations to a
job well done!

Isla Kellock

Christina Rondon

Recipe of the Month

Chicken Spectacular

Ingredients:

- 1 (6 Oz.) Box long grain wild rice with herbs
- 4 Cups cooked chicken (cut in pieces)
- 2 (16 Oz.) cans French style beans (drained)
- 1 Can cream chicken soup
- 1 (4 Oz.) Jar diced pimento
- 1 Medium onion diced
- 1 Can water chestnuts (drained)
- 1 Cup mayonnaise

Cook rice as directed on box. Mix well all ingredients. Put in large casserole dish - top with buttered ritz cracker crumbs. Bake on 350 degrees until brown. This serves 20 people. You may make this into two (2) smaller casseroles.

The Beauty Shop will be closed November 28-29.

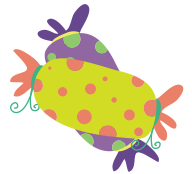
The Beauty Shop will be open November 25-27.

Partner Birthdays

Debra Adkins	11/01
Jannith Brown	11/01
Rebecca Pittman	11/11
Susan Watson	11/12
Debora Wehunt	11/13
Paulette Evans	11/15
Keyera Ferguson	11/15
Kimberly Wall	11/15
Shon Walker	11/19
Jessie Gentry	11/20
Erica Melendez	11/21
Natalie Butler	11/24
Cynthia Oglesby	11/27
Wanda Kloeser	11/29

Partner Anniversaries

Betty Dendy	11/14/1997
Sandra Jones	11/24/1998
Isla Kellock	11/30/2005
Ana Martinez	11/04/2014
Anna Lee	11/11/2014
Elaine Garcia	11/23/2016
Lashay Griffin	11/23/2016
Shon Walker	11/07/2017
Tonya Clark	11/14/2017
Kimberly Wall	11/14/2017
Christina Rondon	11/26/2017
Tara Richards	11/28/2017
Flor Medina	11/29/2017
Jamo Baldeh	11/06/2018
Christopher Dennis	11/06/2018
Frankie Wardlaw	11/06/2018
Dorothea Wearbon	11/15/2018
Paulette Evans	11/16/2018
Tabitha David	11/27/2018



Resident Birthdays



Celebrating November Birthdays

We can hardly believe another year has gone by since we last wished those of you born in October a Happy Birthday. We hope the past year went well for all of you, and we want to send our best wishes for a wonderful birthday full of love and laughter. May the next year be even better than the last.

Honor Our Veterans

Please thanks the Veterans with flags on their chairs.

Veterans

Robert Miller	Air Force
Kermit Thompson	Air Force
Donald Dean	Navy



Thanksgiving Lunch

Turkey and dressing with all the trimmings on November 28 during lunch. The cost is \$10 per person. Please make your reservation on or before November 21.



Important Wheelchair Information for Families

We are in the process of taking inventory of all of our chairs and getting them numbered, labeled and matched to all of the appropriate accessories (leg-rests, cushions, etc.). We are doing this in an effort to make sure all patients remain in the chair they have been assigned. When a patient comes in they are assessed by Physical or Occupational Therapy and placed in the chair that is best suited for their diagnosis, need, and/or physical limitations. Patients are re-assessed as warranted by any change in their status. Just a few things to remember:

1. If you notice a change in your family member, please let us know and we will assess them to see if we need to change their chair.
2. If your family member is going to a doctor's appointment or going on an outing and you need a specific chair, please let us know 1 day in advance and we will have a chair ready for you.
3. If you notice that your family member's chair need to be repaired, ask any staff to fill out a wheelchair repair form and we will be happy to take care of it.
4. If, at times, it seems to take a little while for wheelchair repairs or changes to be made, please do not hesitate to ask us about it, it is likely we are waiting on a new part or an entirely new chair to come in.

Thank you for your patience as we strive to improve our wheelchair program

-NHC HealthCare Mauldin Rehab Department

Therapeutic Leave of Absence

Due to the holidays approaching so quickly, we would like to remind our families and partners of the following steps needed when your loved one leaves the facility for a therapeutic leave of absence:

1. We ask that the family member/partner accompanying the resident on the outing please sign the resident out in our LOA (leave of absence) book located on each unit at the nurses station. A staff member will then sign as a witness with the date and time of your loved ones departure.
2. We ask that upon your loved ones arrival back from the outing, the resident be signed in by the family member or partner returning with resident in our LOA book. A staff member will then sign as a witness with the date and time of your loved ones arrival.

The holidays are very special time for our residents and we appreciate all that you do to help us ensure that all of your loved ones get cared.

Pictures with Santa Claus

LJ's Photography will be at the annual Christmas party with Santa Claus on December 10 from 4:30 p.m till 7:00 p.m. Laura Hoff, the photographer, will be taking family pictures. Families will be able to order additional pictures and enlargements. Unfortunately, LJ's Photograghy will not accept orders past December 4 and all pictures must be paid in full by December 4. For more information, please call Heather G. Wiegand, Director of Activities at (864) 527-9457. We look forward to working with you and your family during this holiday season.

Additional Picture Prices:

- 4 x 6, \$4.00
- 5 x 7, \$7.00
- 8 x 10, \$12.00

Christmas Money

The Holiday season is approaching and NHC HealthCare Mauldin is concerned that many residents will receive money in their Christmas cards. Please be aware NHC discourages any amount of money to be kept at the bedside. For the patient's convenience, the center provides a Patient Trust Fund to safeguard such funds as Social Security checks and gifts of cash which could be left **unattended in a patient room.**

NHC maintains a uniform policy of accounting for patient funds, which is subject to any and all regulation and audit procedure required by federal and state agencies.

Please see Lisa Bollinger, Business Office Manager if you would like information on a Patient Trust Fund account for your loved one.





A Message From the Administrator

Dear Families of NHC HealthCare Mauldin:

The holiday season is fast approaching, so here are a few reminders from the State Fire Safety Codes regarding holiday decorations:

1. Please use non-flammable holiday decorations ONLY. Remember all decorative materials MUST be noncombustible.
2. Do NOT use electrical lights on live trees/plants/flowers.
3. Please remove dried out/dead plants/wreaths/flowers.
4. DO NOT use electrical extension cords or power strips!!
5. Decorations on doors CAN NOT cover more than 1/3 of the door.

Also:

When you bring food into the facility and you wish your family member to keep it at bedside, please be sure that it is in a secure container with a tight fitting lid. (Tin or plastic)

We realize that your loved one has special needs and I encourage you to contact me at any time that you feel a situation warrants my attention. The following numbers are for your convenience.

Facility: (864) 675-6421

Also the direct lines to the nursing stations:

Unit 1 (864) 527-9458

Unit 2 (864) 527-9460

Unit 3 (864) 527-9467

Again, thank you for the opportunity to care for your loved one. My door is always open to you and I hope your loved one's stay at NHC HealthCare is exceptionally pleasant.

Thank You,
Mr. Gideon Sellars, Administrator

Dear Friends and Family,

We want to express our sincere appreciation for your support of our efforts in the Alzheimer's Association Walk to End Alzheimer's TM. Your donations were incredibly generous. NHC HealthCare Mauldin was able to raise \$4,072.00 and we are still collecting funds. Today, as many as 5.4 million Americans are living with Alzheimer's disease- and nearly 15 million more acts as caregivers for a loved one with the disease. Your donation will help by advancing the Association's efforts in Alzheimer's care, support and research. Thank you again for your donation to help us move close to a world without Alzheimer's disease. Greenville area raised \$363,222.00 to date and as of 10/18/2019, NHC HealthCare's National Team has raised \$158,271

Christmas Lunch

A wonderful lunch on December 25 during lunch. Please make your reservation on or before December 18. The cost is \$10 per person.



Family Orientation Meetings

We would like to inform new families that we hold weekly group orientation meetings every Wednesday at 2:00pm in the Main Dining Room across from the Front Lobby. Hope to see you there.



Caris Hospice, an affiliate of National HealthCare, enhances care when an illness no longer responds to aggressive, cure-oriented treatments. Caris Hospice provides pain and symptom relief, as well as emotional and spiritual support for patients and their families.

Call 1-800-HOSPICE Today.

Interested in Volunteering?

Caris Healthcare is a member of the NHC family and a provider of hospice care-- a special way of caring for people in the final stage of life. Hospice provides physical, emotional and spiritual care to terminally-ill patients and their families. Caris is always looking for compassionate and dedicated volunteers. Our volunteers represent people from all walks of life with varied interests who lend their life experiences to help the patients and families we serve.

Volunteers can...

- Provide emotional support and friendship
- Read to patients
- Share favorite songs
- Participate in crafts and activities
- Make a difference in the lives of people in our community.

Contact Cathy at: ctalman@carishealthcare.com
864.297.7444

December Outing

The residents are planning an outing for December. The cost of the trip will be \$35. This includes transportation and a ticket. In order to reserve your spot, payment and paper work needs to be filled out and returned to the front office by December 9. Make checks payable to NHC HealthCare Mauldin Activities Department.

Happy Holidays

Submitted by Mr. Gideon Sellars, Administrator

Dear Families:

Once again we are about to share in the most glorious season of the year - Christmas! It is the time of the year when we all should take a moment to reflect on what this wondrous occasion means to each and every one of us. It's a time for family gatherings and visits with friends and neighbors we haven't seen in a while. It is a time to say "Thank You" for allowing us to care for your family member and in doing so allowing us to be a part of your family. It is the time of year for sharing, caring, worship, love, forgiveness and for hope and peace for all mankind.

It is the time for celebrations and joy and I hope you experience much of this during this Christmas Season. I wish for you and your family the most wonderful and joyous Christmas ever and a healthy, happy and prosperous New Year.

Merry Christmas!

